

United Motors Service - Delco

Model: 984170, Pontiac

Chassis:

Year: Pre 1948

Power:

Circuit:

IF:

Tubes:

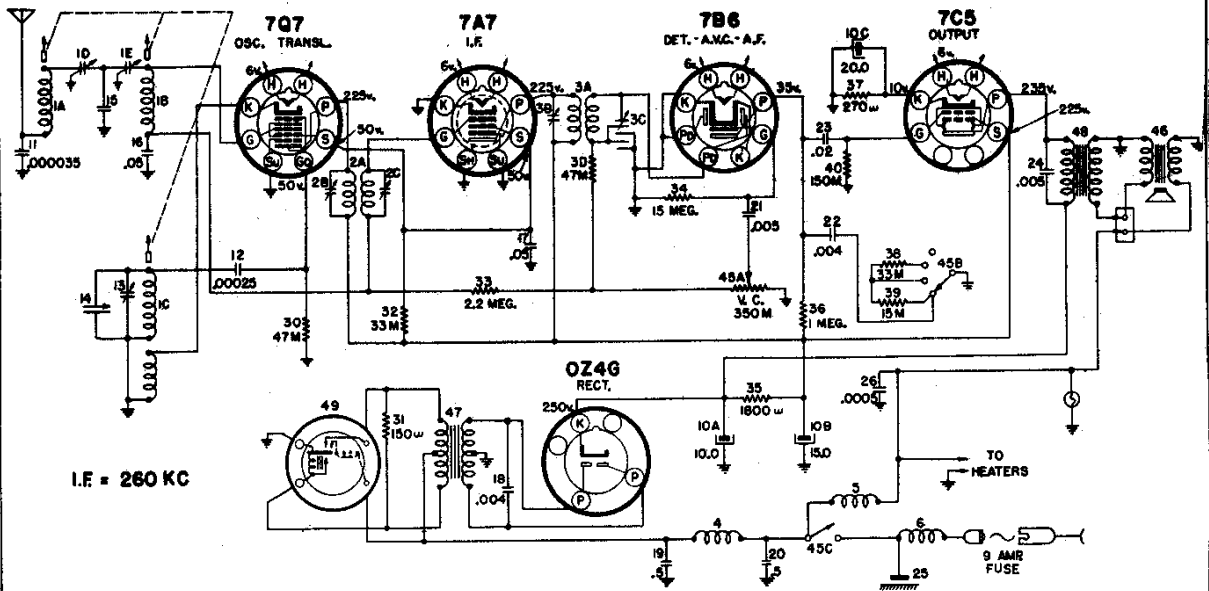
Bands:

Resources

Riders Volume 16 - UNITED MOTORS 16-11

Riders Volume 16 - UNITED MOTORS 16-12

UNITED MOTORS SERVICE CORP. MODEL 984170, Pontiac
(DIV. OF GEN. MOTORS)



READINGS TAKEN FROM TUBE SOCKET CONTACTS TO GROUND WITH A 1000 OHMS PER VOLT D.C. VOLTMETER. "A" BATTERY - 6.0 VOLTS. CURRENT DRAIN - 6.0 AMPERES. "B" SUPPLY DRAIN - APPROX. 50 MA. ALL READINGS ±10%

Illus. No.	Service Part No.	Description	Service Part No.	Description	Service Part No.	Description		
COILS			CHASSIS PARTS - MISCELLANEOUS			RADIO PACKAGE CONTENTS		
1	1216539	Tuning Coil & Core Assembly	187289	Bulb - Pilot Light - Mazda #44	504617	"A" Lead & Female Fuse Holder Assy.		
1A		Antenna Coil	1215926	Bushing - Station Selector Shaft	1873686	Adaptor - Radio Distributor Suppressor		
1B		Grid Coil	1216535	Connector Assembly - Antenna	505629	Bolt - 1/4-20 x 5/8 Hex Hd. Special - Zinc (Receiver to Brace)		
1C		Oscillator Coil	1214394	Connector Assembly - "A" Lead	1849161	Capacitor Assembly - Ammeter (.5 Mfd.)		
1D		Antenna Trimmer	1215937	Cover - Case Back	1864865	Capacitor Assembly - Generator (.5 Mfd.)		
2	1215916	1st I. F. Assembly	1215927	Cover - Power Supply	147684	Fuse - (9 Amp.) "A" Lead		
2A		I. F. Coil Assembly	1216536	Dial Pointer & Slide Assembly	509129	Insulator - Radio Distributor		
2B		Primary Trimmer	7242463	Dial - Window	507505	Suppressor		
2C		Secondary Trimmer	1863407	Nut - 1/2-28 Mtg. Spacer	507510	Knob Assy. - Radio Tuning and Volume Control		
3	1215917	2nd I. F. Assembly	1214471	Pin Connector - Speaker	507511	Knob - Radio Dummy		
3A		Grid Coil Trimmer	1214472	Pullay - Wood 7/16 OD	7235968	Knob - Radio Tone Control		
3B		Primary Trimmer	1216587	Push Button Assembly	509011	Nut - 1/2-28 Thin Hex - Zinc (Receiver to Instrument Panel)		
3C		Secondary Trimmer	1213685	Screw - Cover Retaining	508583	Owners Instruction & Warranty Card		
3D		Resistor 47,000 Ohm	1215932	Shaft Assembly - Front Drive	144722	Plate - Radio Control Finish		
4	1213663	Hash Choke	1215933	Shaft Assembly - Rear Drive	506418	Screw - #7 x 3/8 Rnd. Hd. Type "A" Self Tapping - Zinc		
5	1214385	Filament Choke	1215936	Socket Assembly - Pilot Light	1207821	Suppressor - Radio Distributor		
6	1217193	Spark Choke	7238455	Socket - Lock-In	504618	Tube - Fuse Insulating		
			1214420	Socket - Rectifier	121773	Washer - 1/4 External Tooth Lock		
			1213684	Socket - Vibrator	1299232	Washer - 1/4 Flat Special - Zinc		
			1214399	Speaker Gasket - Rubber	7238755	Washer - Radio Dummy Knob - Spring		
			1216036	Spring - Core Driving	505630	Washer - Radio Tone Control Knob-Felt		
			1215934	Spring - Rear Drive Shaft				
			1214386	String & Spring Assy. - Pointer Drive				
			1216538	Tuner Unit - Mechanical Portion Only				
CAPACITORS			RESISTORS			MISCELLANEOUS ELECTRICAL PARTS		
10	1213868	Electrolytic	30	1214553	47,000 Ohm 1/2 Watt	45	1216541	Control-Volume-Tone-Switch
10A		10 Mfd. 350 Volt	31	1211005	150 Ohm 1 Watt	45A		Volume Control 350,000 Ohm
10B		15 Mfd. 300 Volt	32	7242447	33,000 Ohm 1 Watt	45B		Tone Control Switch
10C		20 Mfd. 25 Volt	33	1214563	2.2 Megohm 1/2 Watt	45C		On-Off Switch
11	1214949	.000035 Mfd. Moulded	34	1213343	15 Megohm 1/2 Watt	46	1214389	Speaker - Electro Dynamic
12	1209052	.00025 Mfd. Moulded	35	1214873	1800 Ohm 2 Watt	47	1214391	Transformer - Power
13	1215925	Oscillator Trimmer	36	1209885	1 Megohm 1/2 Watt	48	1215918	Transformer - Output
14	1216540	Compensating 265 Mfd.	37	1213846	270 Ohm 1 Watt	49	8638	Vibrator - Plug-in
15	1212098	.004 Mfd. 800 Volt	38	1213845	33,000 Ohm 1/2 Watt			
16	7230592	.05 Mfd. 600 Volt	39	121089	33,000 Ohm 1/2 Watt			
17	7230592	.05 Mfd. 600 Volt	40	1211163	150,000 Ohm 1/2 Watt			
18	1213854	.004 Mfd. 1500 Volt						
19	7240248	.5 Mfd. 100 Volt						
20	7230912	.5 Mfd. 100 Volt						
21	1212098	.005 Mfd. 800 Volt						
22	1212098	.004 Mfd. 800 Volt						
23	1212099	.02 Mfd. 600 Volt						
24	7230912	.005 Mfd. 800 Volt						
25	1212278	Spark 225 Mfd.						
26	1207636	.0005 Mfd. Mica						

PUSH BUTTON SET-UP

Turn counter clockwise - tune in manually - depress loosened button - turn button clockwise to tighten.

MOUNTING - All 1946 Pontiac Cars

TUNING - Manual and 5 P. B.

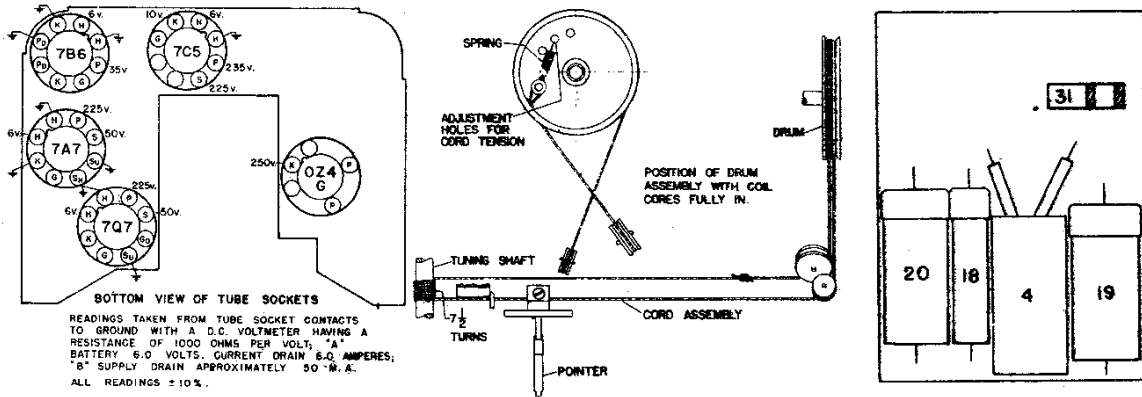
TUBES - 7Q7, 7A7, 7B6, 7C5, OZ4G

TUNING RANGE - 540 KC - 1610 KC

SPEAKER - 6" Electro Dynamic

CAR ANTENNA CAPACITY - 60 mmfd.

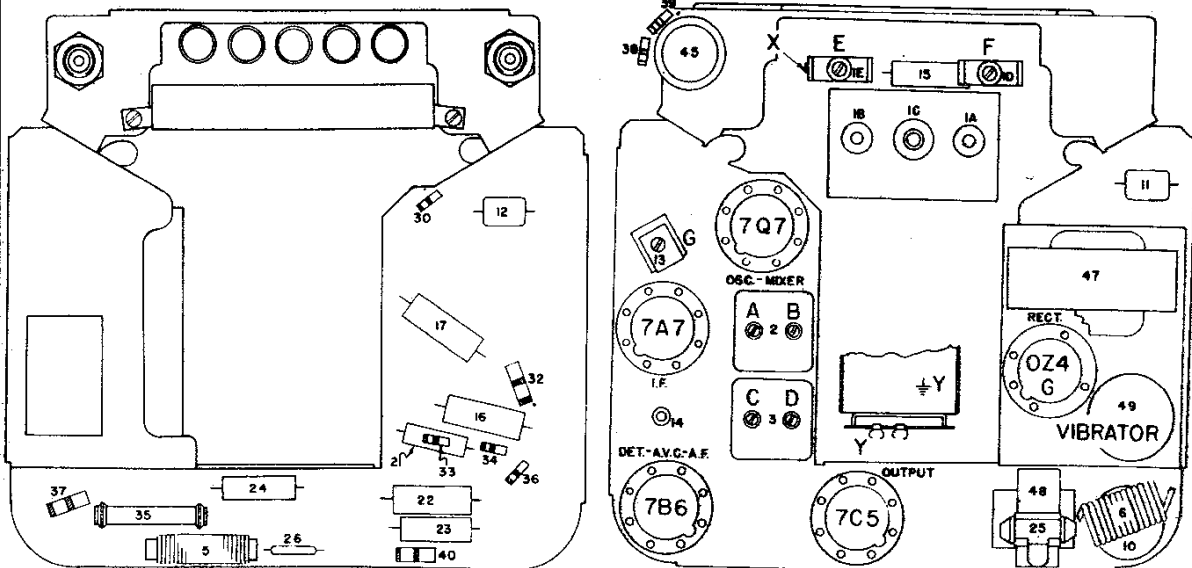
MODEL 984170, Pontiac UNITED MOTORS SERVICE CORP.
(DIV. OF GEN. MOTORS)



SOCKET VOLTAGES

DIAL CORD HOOKUP

POWER PACK LAYOUT



PARTS LAYOUT

ALIGNMENT PROCEDURE

Volume Control maximum.
 Tone Control on high position.
 Signal Generator Output minimum for satisfactory output indication.

Series Capacitor Or Dummy Antenna	Connect To	Signal Generator Frequency	Adjust Screws In Order
0.1 mfd.	Terminal X (See Parts Layout)	260 KC	A, B, C, D
.000060 mfd.	Antenna Terminal	1610 KC	G
.000060 mfd.	Antenna Terminal	1400 KC	E, F

Low frequency alignment not required.
 Adjust Trimmer F to match car antenna (1400 KC) when radio is installed.