

# Service Document

**RRCD 2700 MP3**

**GDS0700**

**GRUNDIG**

**Service  
Manual**

Sicherheit  
Safety

Materialnr./Part No.  
720108000001



Es gelten die Vorschriften und Sicherheitshinweise gemäß dem Service Manual „Sicherheit“, Materialnummer 720108000001, sowie zusätzlich die eventuell abweichenden, landesspezifischen Vorschriften!



The regulations and safety instructions shall be valid as provided by the „Safety“ Service Manual, part number 720108000001, as well as the respective national deviations.

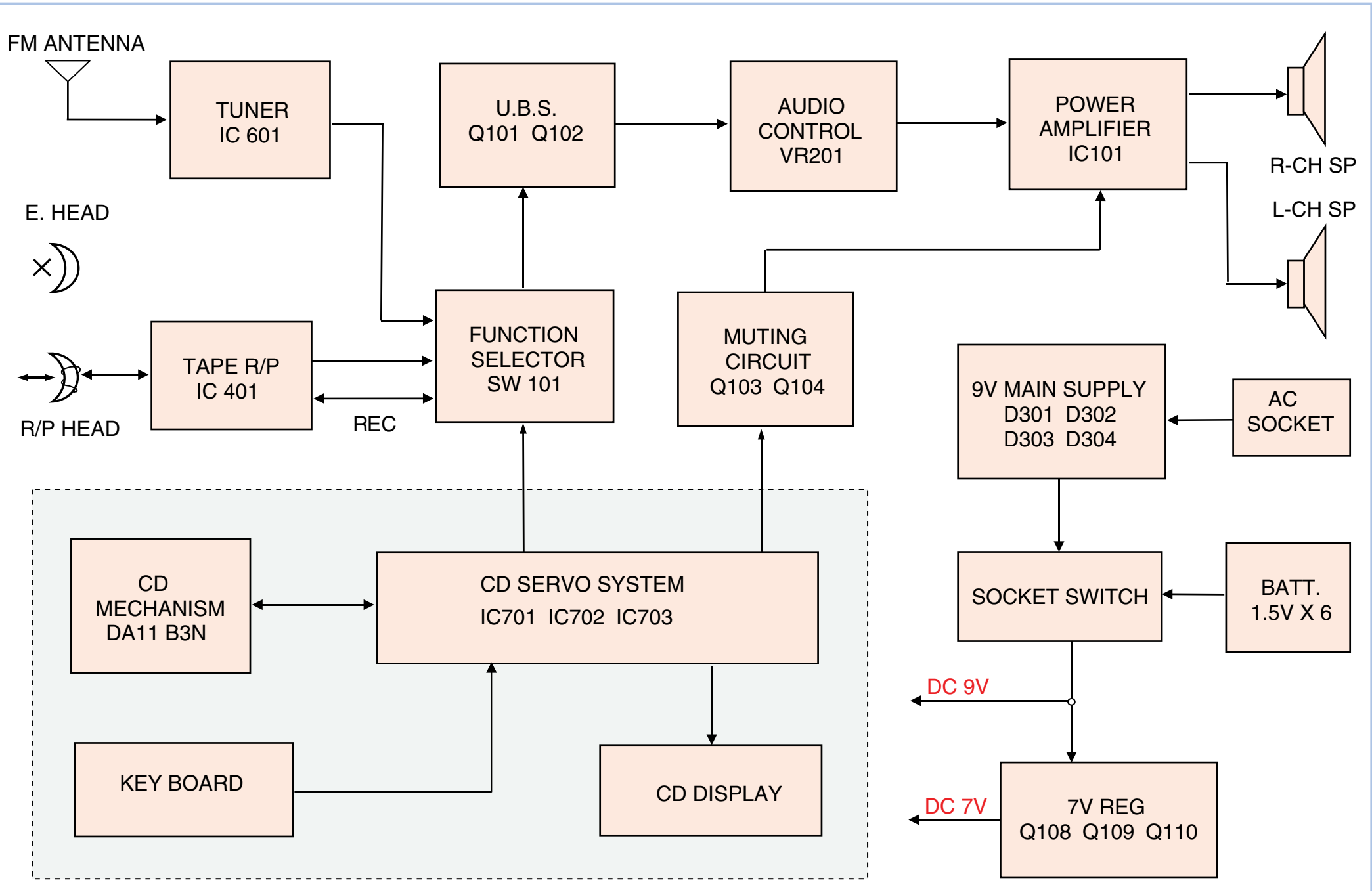
Dieses Service Dokument ist nur in Datenform verfügbar

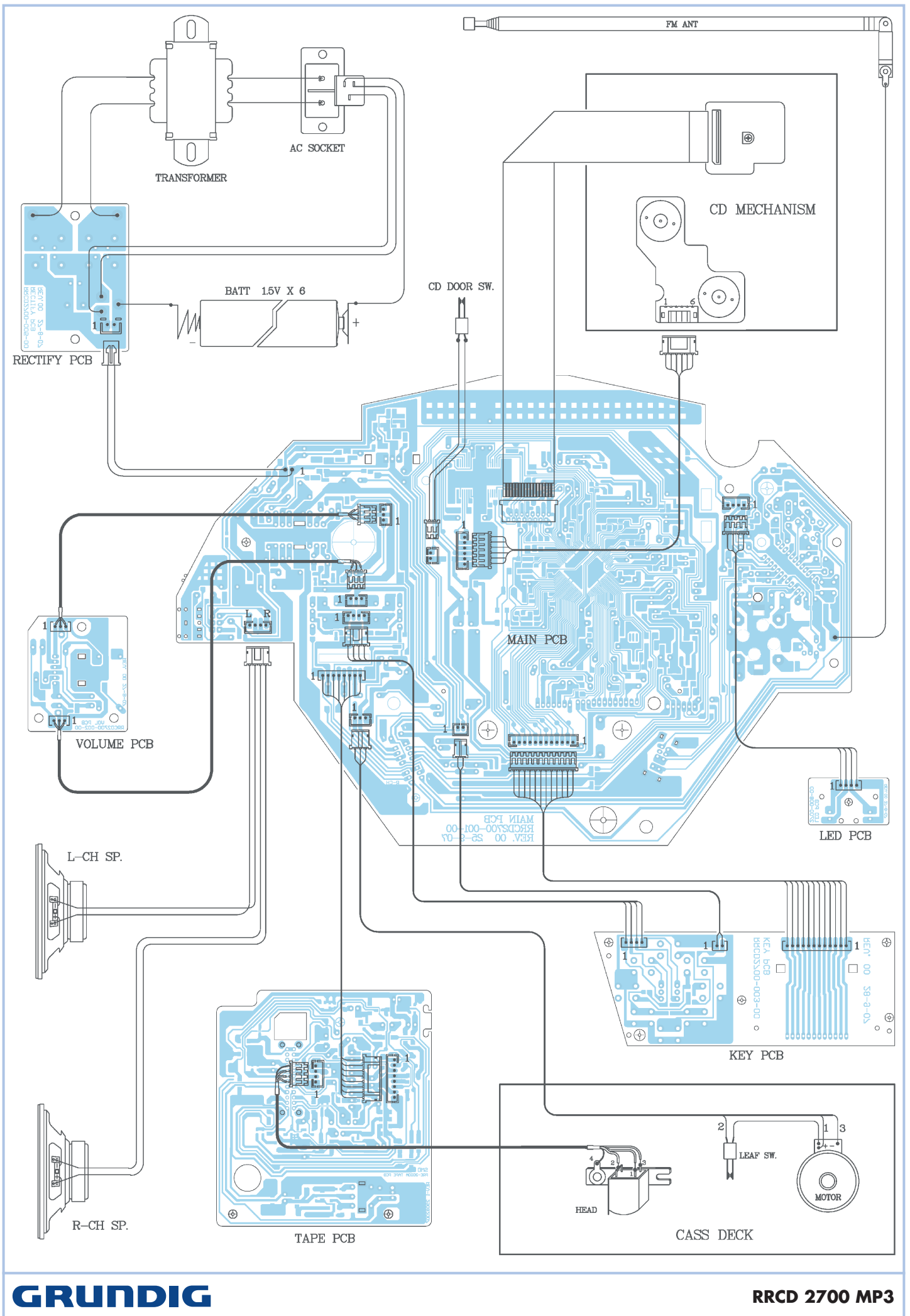
This Service Document is only available as data

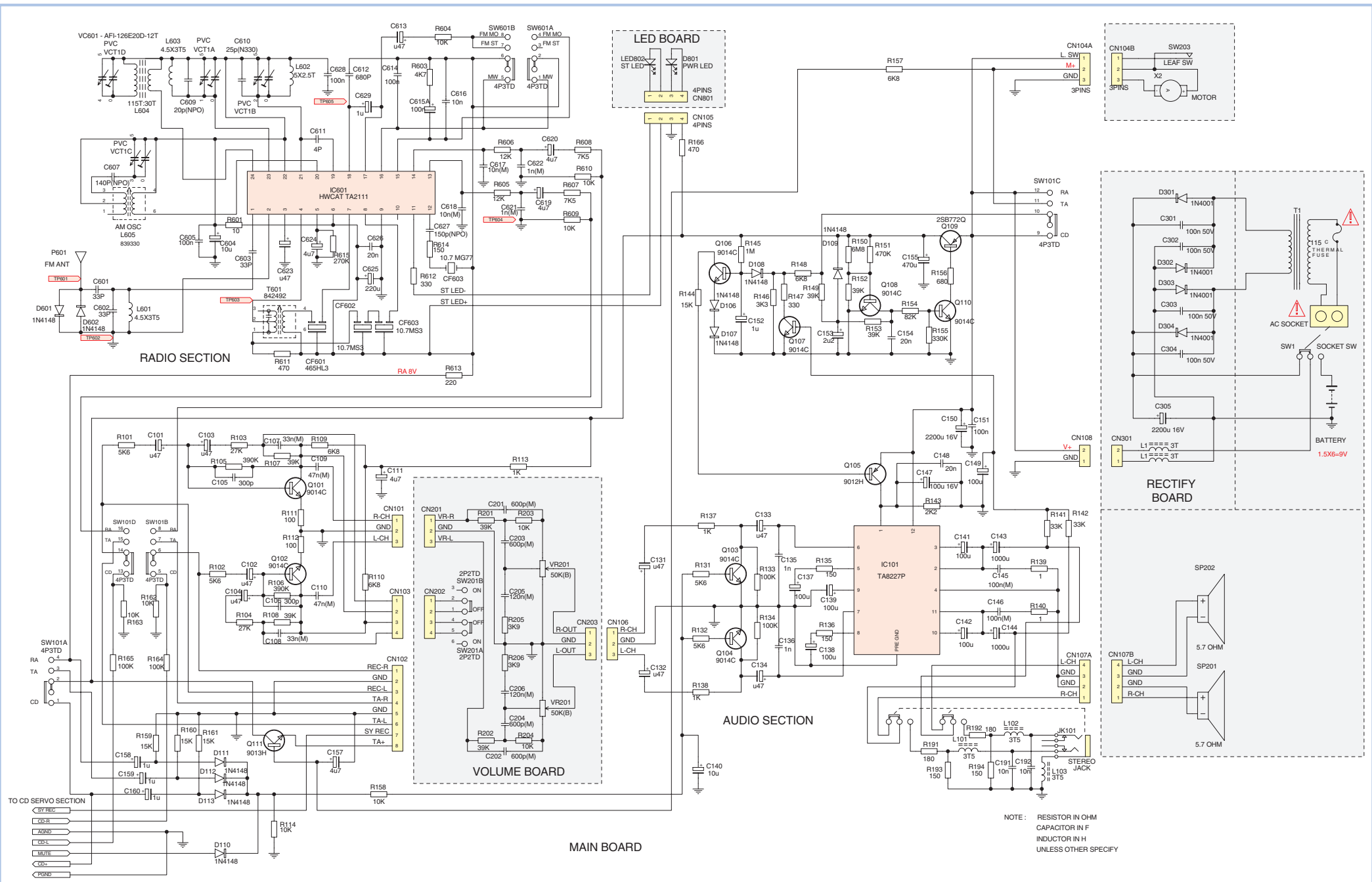
Änderungen vorbehalten/Subject to alteration

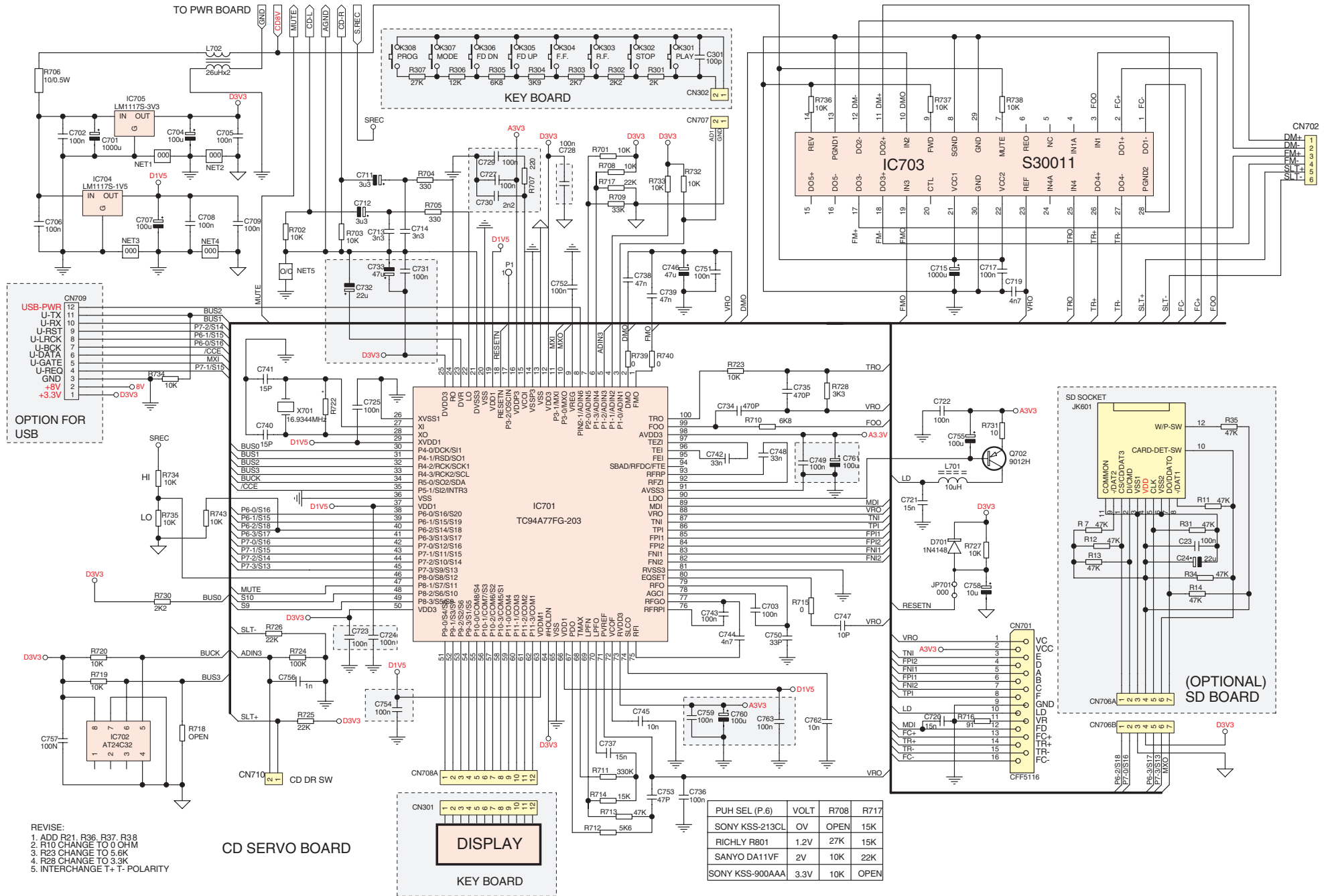
Made by GRUNDIG in Germany • TCC 1107 HH

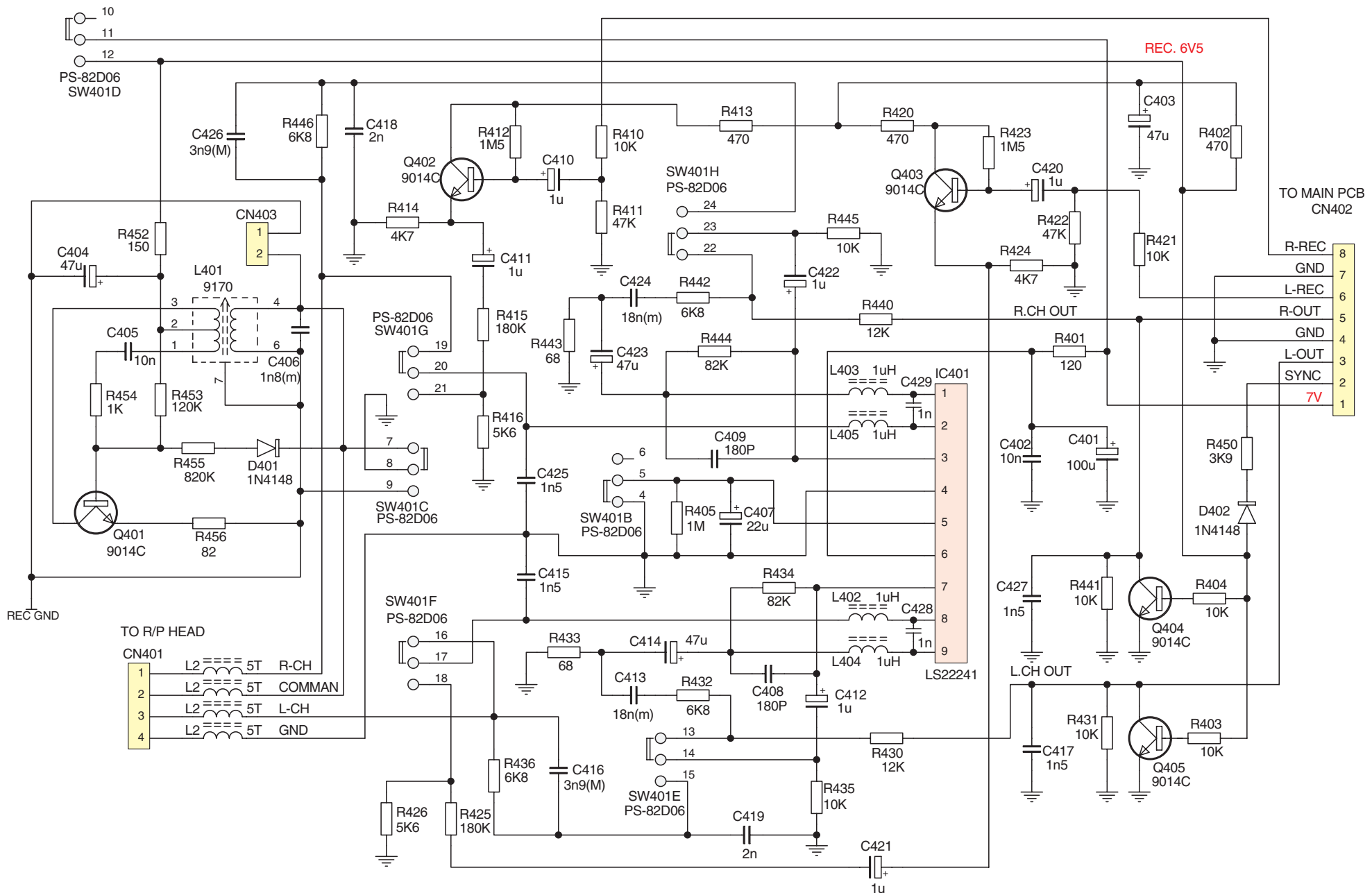
<http://www.grundig.com>

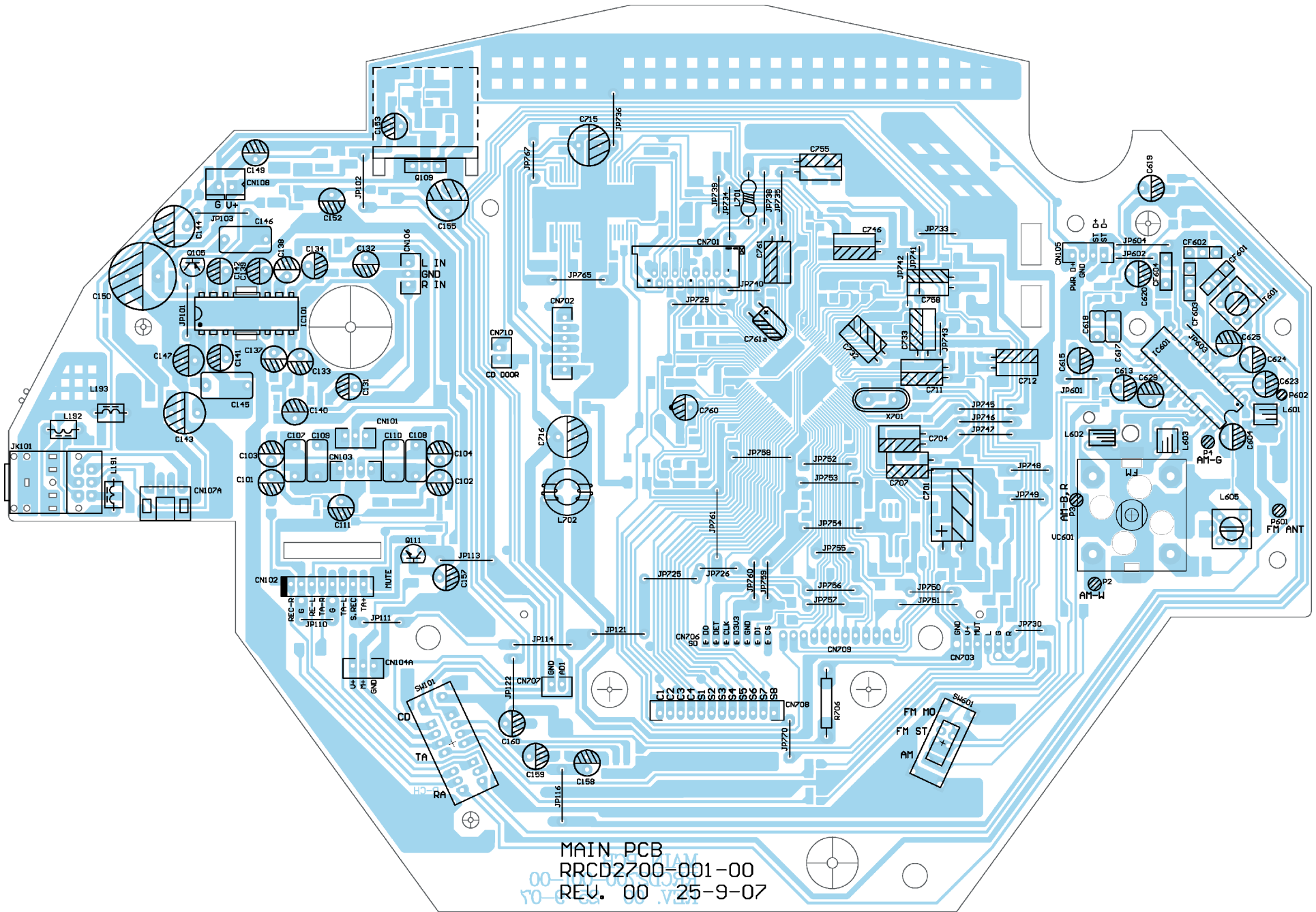




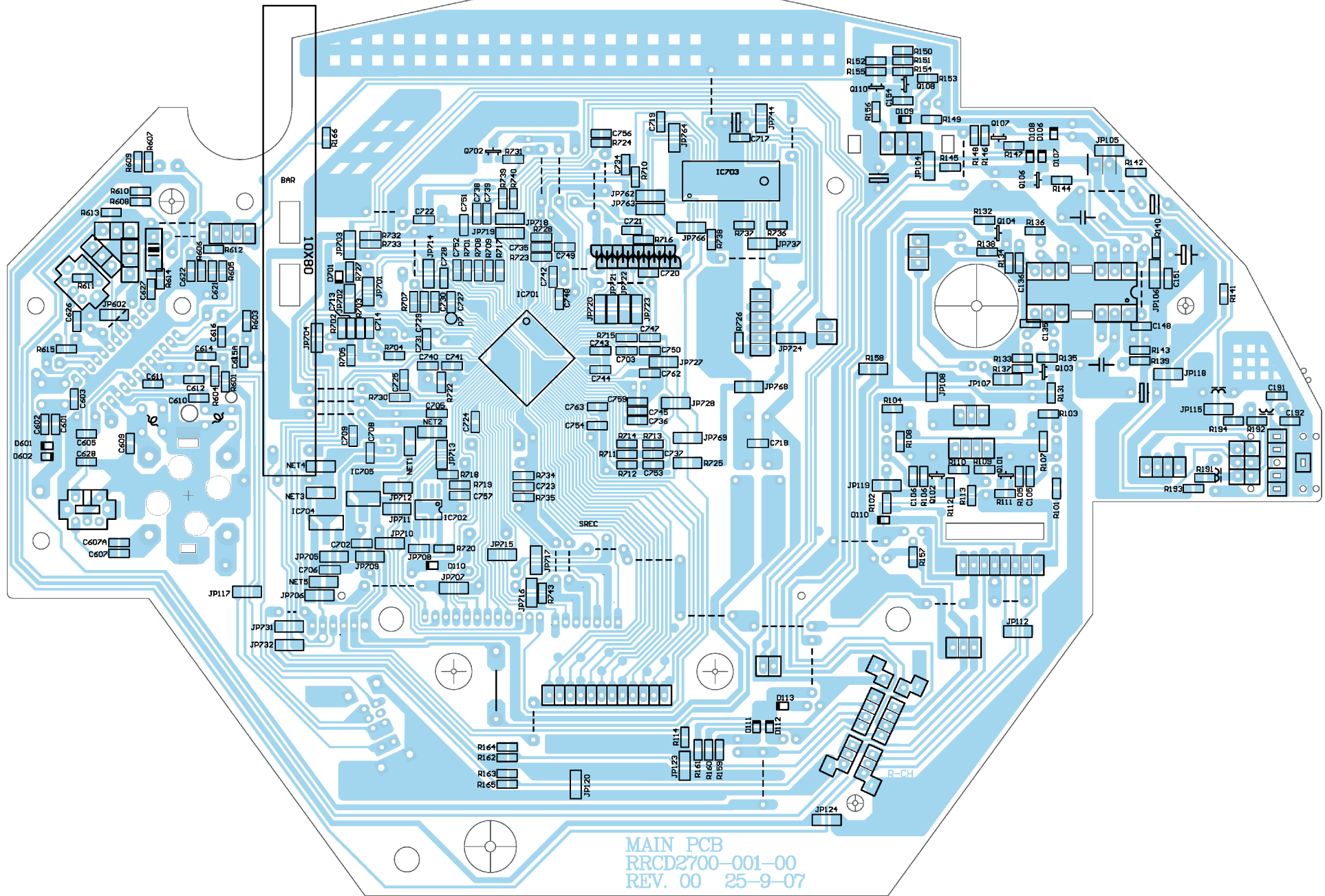






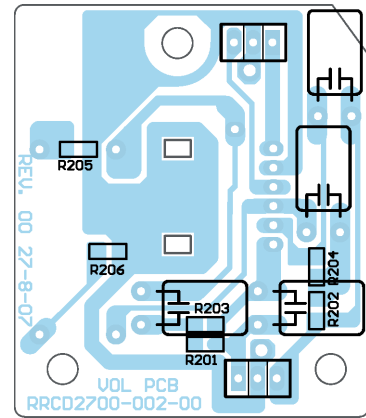
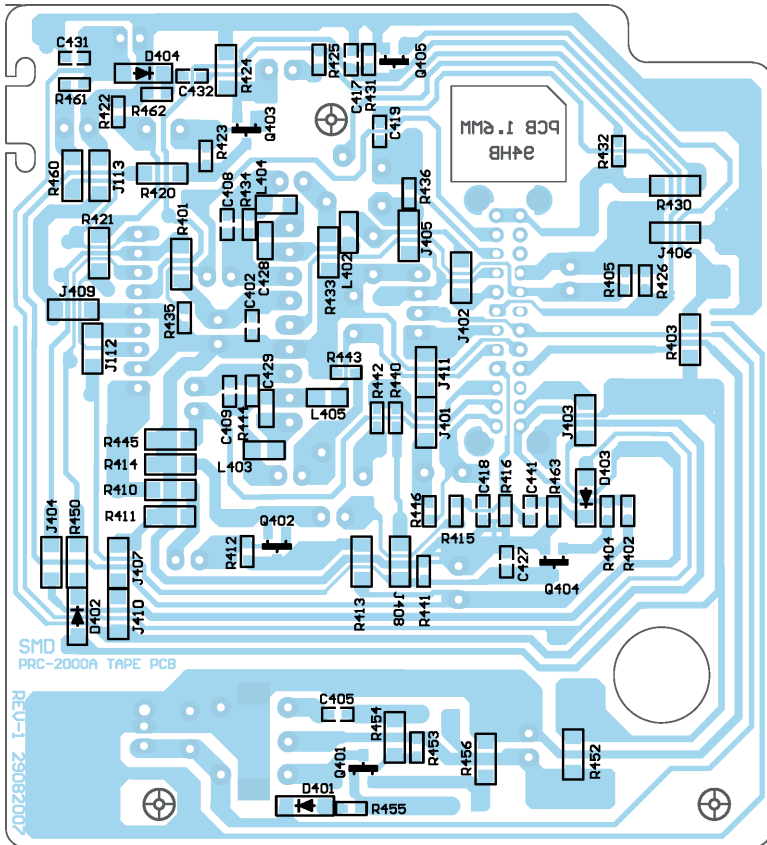
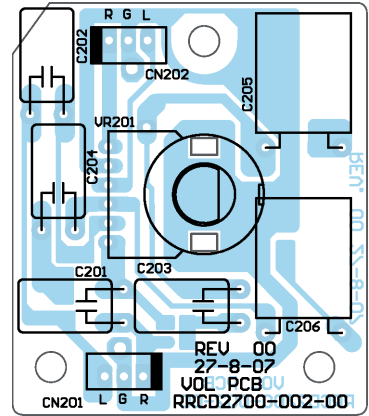
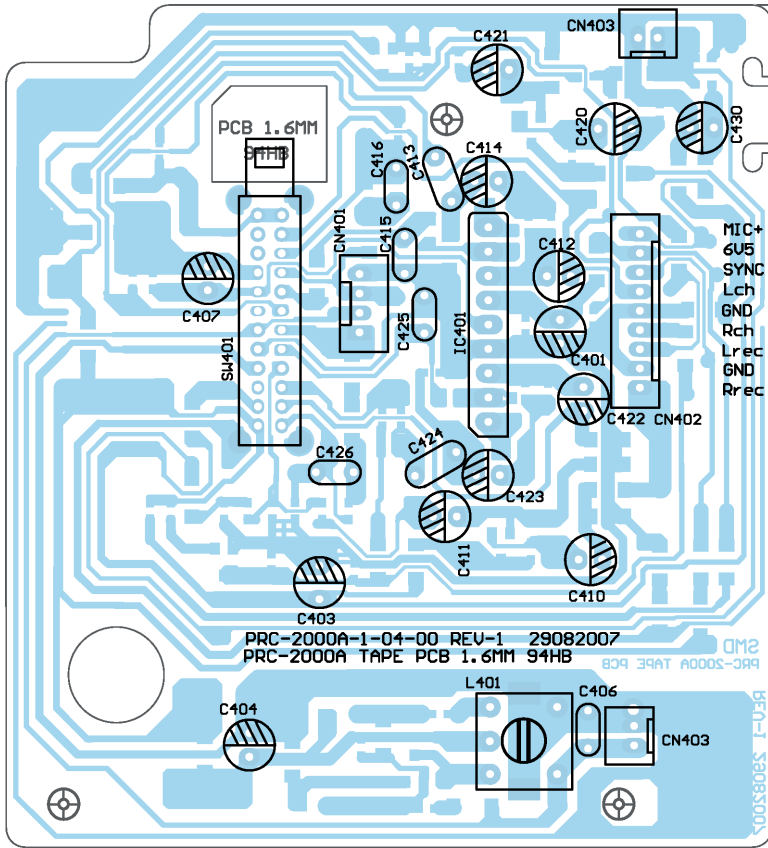


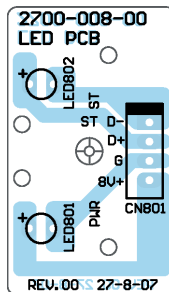
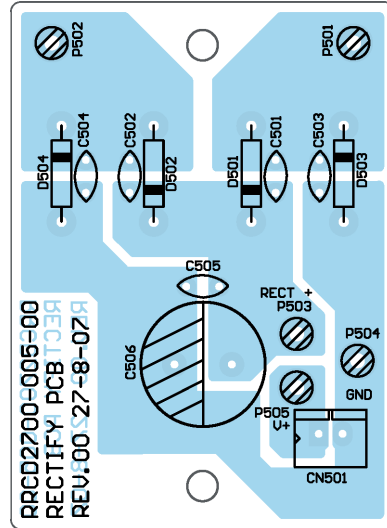
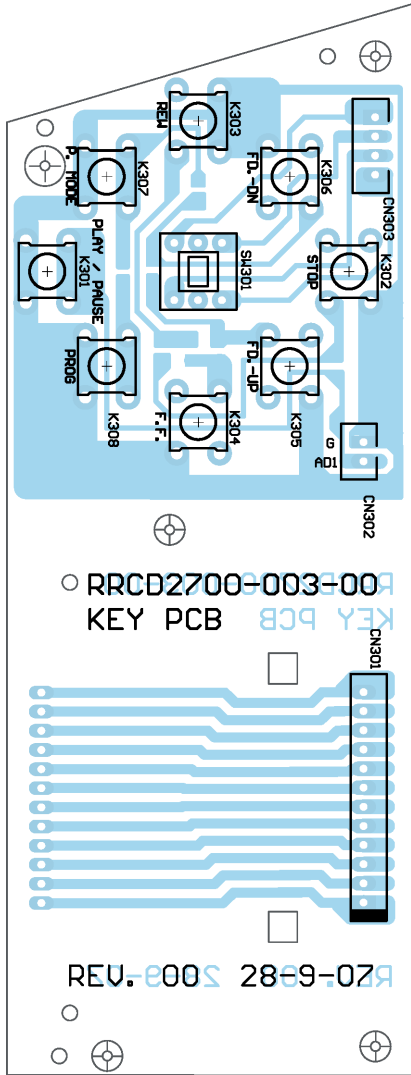
MAIN PCB  
 RRCD2700-001-00  
 REV. 00 25-9-07



MAIN PCB  
 RRCD2700-001-00  
 REV. 00 25-9-07







**INSTRUMENTS REQUIRED**

1. Signal Generator
2. FM Signal Generator
3. FM/AM IF Sweep Generator (10.7 MHz for FM)
4. VTVM
5. Oscilloscope
6. Frequency counter
7. Regulated DC power supply

**GENERAL PREPARATION**

1. Check source voltage, DC or AC according to specifications
2. Set function switch to band being aligned
3. Signal input should be kept as low as possible to avoid AGC and AFC function
4. Standard modulation :  
 AM 1 KHz 30% mod  
 FM 1 KHz 22.5 KHz dev

**AM IF ALIGNMENT**

STEP	SIGNAL SOURCE (AM RF Gen.) CONNECT TO	SET SIGNAL TO	ALIGNMENT INDICATOR (Oscilloscope, VTVM) CONNECT TO	SET RADIO DIAL TO	ADJUST	ADJUST FOR	REMARKS
1	A standard radiation loop	465KHz	TP5 Detector output terminal and ground	Quiet Point	T601	Maximum	Volume control at min. position
2	Repeat step 1 for max. output						

**FM IF ALIGNMENT**

This model requires no FM IF alignment as the IF is fixed by ceramic filter and discriminator CF503 & CF504. Please take note that correct type and same color dot of ceramic filter is used in servicing, diff color dot of ceramic filter may cause worse IF 'S' curve characteristic and distortion.

Connect IF genescope output terminal to TP3 & TP4 (GND) in series with a 1000Pf capacitor, connect scope input terminal to TP5 & TP4 (GND), then the IF characteristic curve can be observed.

**FM RF ALIGNMENT**

STEP	SIGNAL SOURCE (FM Signal Gen.) CONNECT TO	SET SIGNAL TO	ALIGNMENT INDICATOR (Oscilloscope, VTVM) CONNECT TO	SET RADIO DIAL TO	ADJUST	ADJUST FOR	REMARKS
1	TP601 & TP602 through matching network if necessary	87.35 MHz (modulated)	Terminals across speaker voice coil	(Lowest end)	L602 (Osc. coil) stretch or squeeze	Maximum	Volume control at max. position
2		108.25 MHz (modulated)		(Highest end)	VCT1B (Osc. trimmer)		
3		88 MHz (modulated)		88 MHz	L603 (RF coil) stretch or squeeze		
4		106 MHz (modulated)		106 MHz	VCT1A (RF trimmer)		
5	Repeat steps 3 and 4 as necessary to minimize tracking error and also steps 1 and 2 if necessary						

**AM RF ALIGNMENT**

STEP	SIGNAL SOURCE (AM Signal Gen.) CONNECT TO	SET SIGNAL TO	ALIGNMENT INDICATOR (Oscilloscope, VTVM) CONNECT TO	SET RADIO DIAL TO	ADJUST	ADJUST FOR	REMARKS
1	A standard radiation loop ant.	515 KHz (modulated)	Across speaker voice coil	(Lowest end)	L605 (Osc. coil)	Maximum	Volume control at max. position
2		1635 KHz (modulated)		(Highest end)	VCT1C (Osc. trimmer)		
3		600 KHz (modulated)		600 KHz	L604 (ant. coil)		
4		1400 KHz (modulated)		1400 KHz	VCT1D (ant. trimmer)		
5	Repeat steps 3 and 4 as necessary to minimize tracking error and also steps 1 and 2 if necessary						

**CD SECTION**

- 1 This model is using CD drive unit No. SANYO DA11B3V
- 2 The alignment for CD section is fully automatic and no adjustment is required

**GENERAL PREPARATION** - 1) Check source voltage, DC or AC according to specifications . 2) Set function switch to Tape being aligned .

**A) MEASURING INSTRUMENTS REQUIRED FOR TAPE SPEED AND HEAD AZIMUTH ADJUSTMENT.**

**(1) TAPE SPEED ADJUST**  
MTT-211NA (3150 Hz) TEST ◦

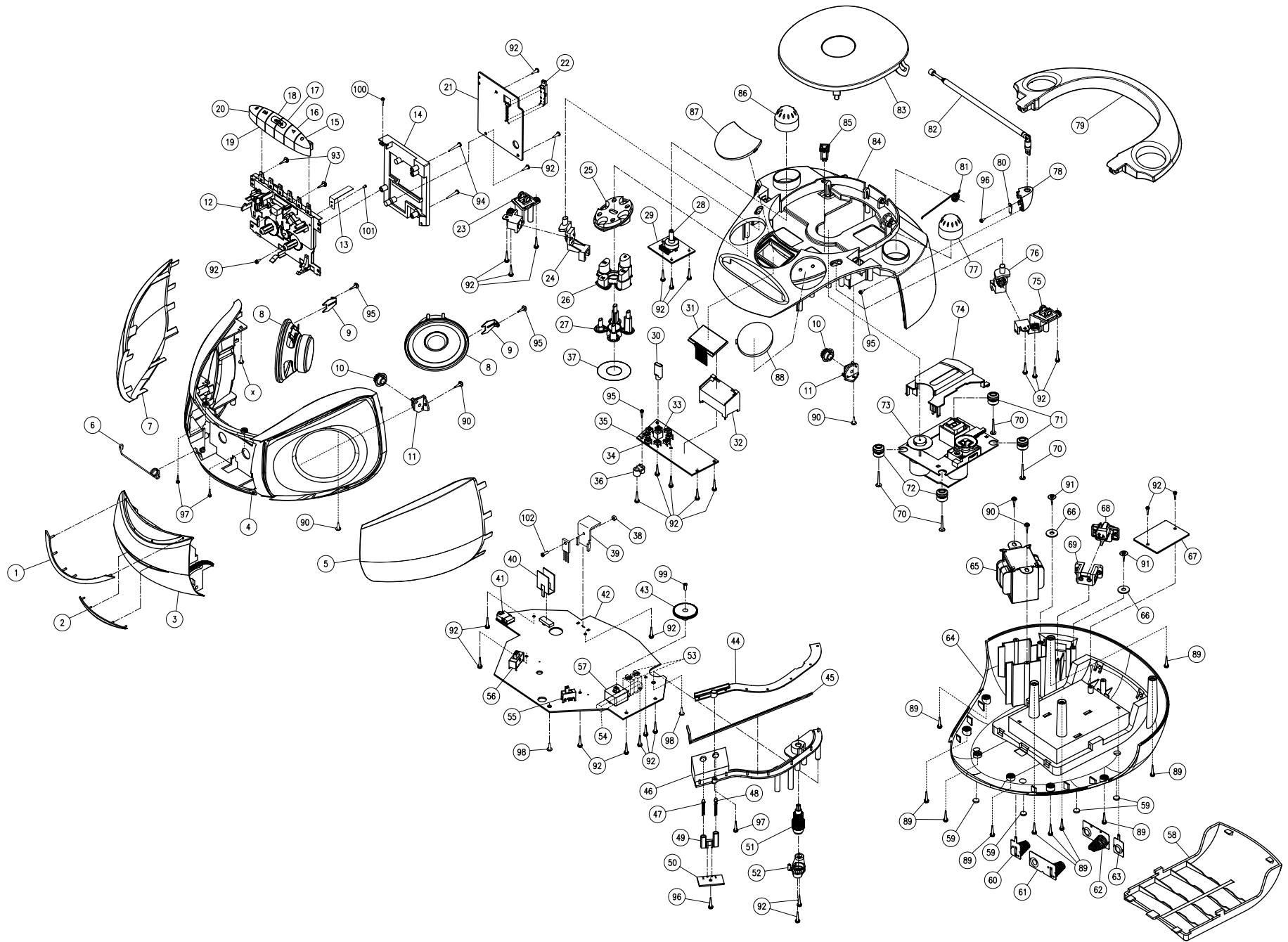
**(2) HEAD AZIMUTH ADJUSTMENT.**

- 2.1 - Connect the equipments as shown in the Fig. 1. (The Both Speakers loading Are Required)
- 2.2 - Insert a test tape ( 10 KHz : MTT-114 ) into deck.
- 2.3 - Press PLAY and set VOLUME at reference output.
- 2.4 - Adjust the azimuth adjustment screw for the max. & balance ch. output on both ch. of oscilloscope.
- 2.5 - Secure above screw with glue after adj. completed.

**B) EQUIPMENTS REQUESTED FOR AC BIAS FREQUENCY / CURRENT ADJUSTMENT :**

**AC BIAS FREQUENCY ALIGNMENT :**  
 Note :The test unit should be keep in recording mode and added two resistors Ra & Rb as shown in the Fig. 2 before alignment. be sure to delete the both resistors Ra & Rb after alignment completed.

Test Point	Adjust	Frequency at Beat 0	Frequency Observe at		Observe		
			Beat 1	Beat 2	Beat 0	Beat 1	Beat 2
Resistor Ra or Rb	L401	60 KHz ± 0.3K					





## Ersatzteilliste Spare Parts List

## AUDIO

### 11 / 2007

### RRCD 2700 MP3

BESTELL-NR. / ORDER NO.: GDS0700

POS. NR. POS. NO.	ABB. FIG.	MATERIAL-NR. PART NUMBER	ANZ. QTY.	BEZEICHNUNG 	DESCRIPTION 
		GDS0700		RRCD 2700 MP3 BLACK KEIN E-TEIL	RRCD 2700 MP3 BLACK NO SPARE PART
0082.000 0058.000		759540381600 759540381700		STABANTENNE BATTERIEFACHDECKEL	ROD ANTENNA BATTERY DOOR
				DIE BEDIENUNGSANLEITUNG KOENNEN SIE IM INTERNET UNTER FOLGENDER ADRESSE ABRUFEN: WWW.GRUNDIG.DE MENU: DOWNLOADS	THE INSTRUCTION MANUAL CAN BE DOWNLOADED FROM THE INTERNET UNDER THE FOLLOWING ADDRESS: WWW.GRUNDIG.DE MENU: DOWNLOADS
				<b>HINWEIS!</b> IM DEFEKTFALL NEHMEN SIE KONTAKT MIT UNSERER HOTLINE AUF	<b>NOTE!</b> IN THE EVENT OF A DEFECTIVE PLEASE CONTACT YOUR SERVICE

Es gelten die Vorschriften und Sicherheitshinweise gemäß dem Service Manual "Sicherheit", Mat.-Nummer 720108000001, sowie zusätzlich die eventuell abweichenden, landesspezifischen Vorschriften!



The regulations and safety instructions shall be valid as provided by the "Safety" Service Manual, part number 720108000001, as well as the respective national deviations.

ÄNDERUNGEN VORBEHALTEN / SUBJECT TO ALTERATION