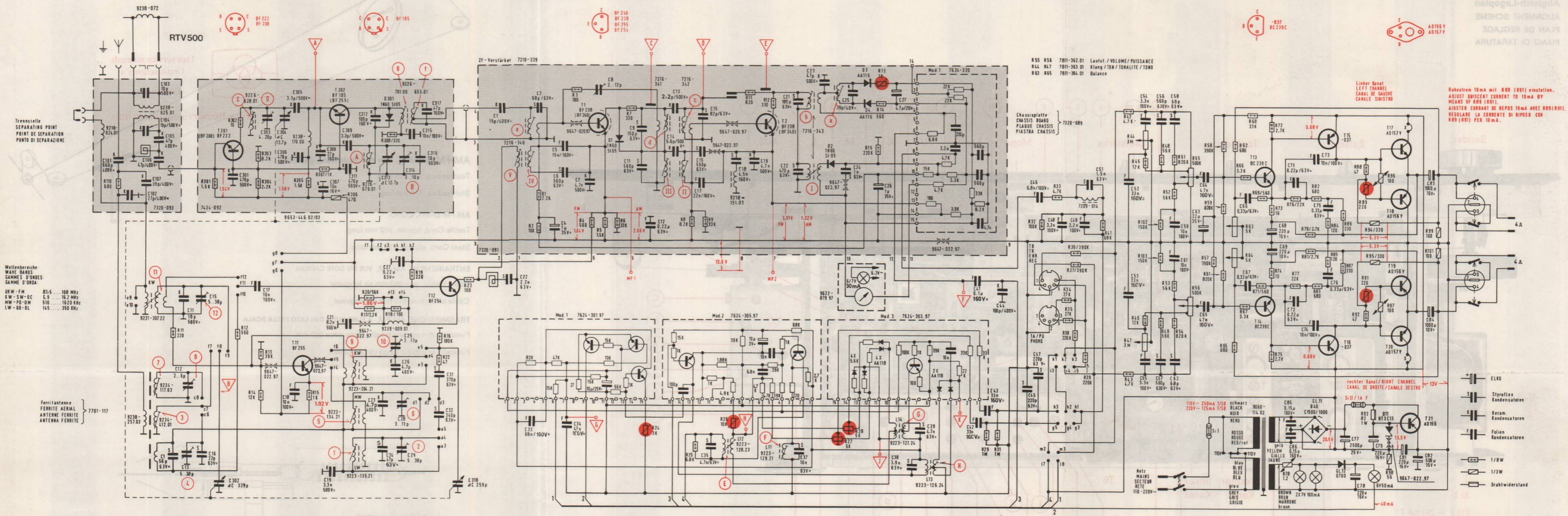
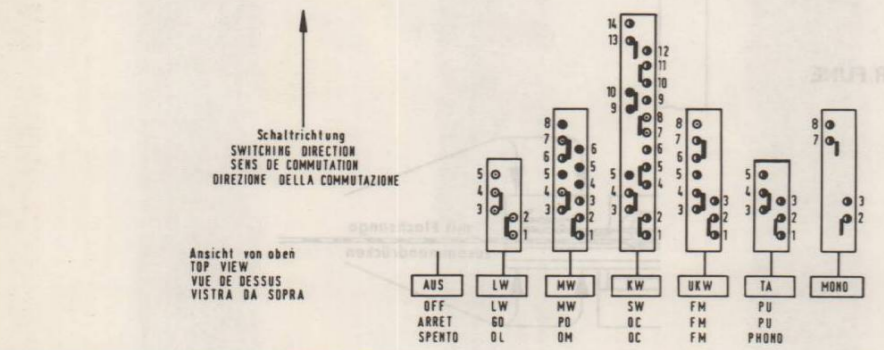


Alphabetisch-geordnet
ALPHABET SCHEME
PLAN DE REGAGE
PIANO DI RASATURA

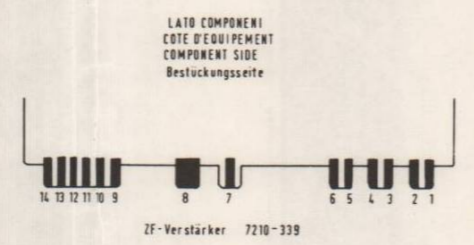


Wellenbereiche
WAVE BANDS
GAMMES D'ONDES
UKW - FM 87,5 - 108 MHz
KW - SW-DC 5,9 - 16,2 MHz
MW - PD-QM 510 - 1620 kHz
LW - OD-OL 145 - 350 kHz

Ferritantenne
FERRITE AERIAL
ANTENNA FERRITE
7701-117



○ Kontakt oben
CONTACT AT TOP
CONTACT EN HAUT
CONTATTI DA SOPRA
● Kontakt unten (kurz)
CONTACT AT BOTTOM (SHORT)
CONTACT EN BAS (COURT)
CONTATTI DA SOTTO (CORTO)
● Kontakt oben und unten (kurz)
CONTACT AT TOP AND BOTTOM (SHORT)
CONTACT EN HAUT ET EN BAS (COURT)
CONTATTI SOPRA E SOTTO (CORTO)



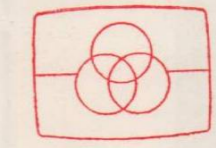
Änderungen vorbehalten
ALTERATIONS RESERVED
MODIFICAZIONI RISERVATE
CON RISERVA DI MODIFICA

Spannungen mit Grundig Bühnenvoltmeter ohne Signal gemessen
VOLTAGES MEASURED WITH GRUNDIG VALVE VOLTMETER WITHOUT SIGNAL.

TENSIONI MISURATE SENZA SEGNALE CON VOLTMETRO ELETTRONICO GRUNDIG

Vorzeichen für Transistoren und Dioden
INDEX NUMBER FOR DIODES AND TRANSISTORS
CHIFFRES REPÈRES POUR DIODES ET TRANSISTORS
SIELLA PER DIODI E TRANSISTORI

Leistungsaufnahme ohne Signal 7 W
bei Vollaststeuerung (2x4 W, 1000 Hz) 25 W (10kW)
POWER CONSUMPTION - APPROX 7 W WITHOUT SIGNAL AT MAXIMUM LEVEL (2x4 W, 1000 Hz) 25 W (FM)
CONSUMATION ENV. 7 W SANS SIGNAL A MODULATION MAXIMALE (2x4 W, 1000 Hz) 25 W (FM)
DISSIPAZIONE: SENZA SEGNALE 7 W A MASSIMO PILOTAGGIO (2x4 W, 1000 Hz) 25 W (FM)



Free service manuals
Gratis schema's
AM-FM-Grundchassis RC400
Digitized by

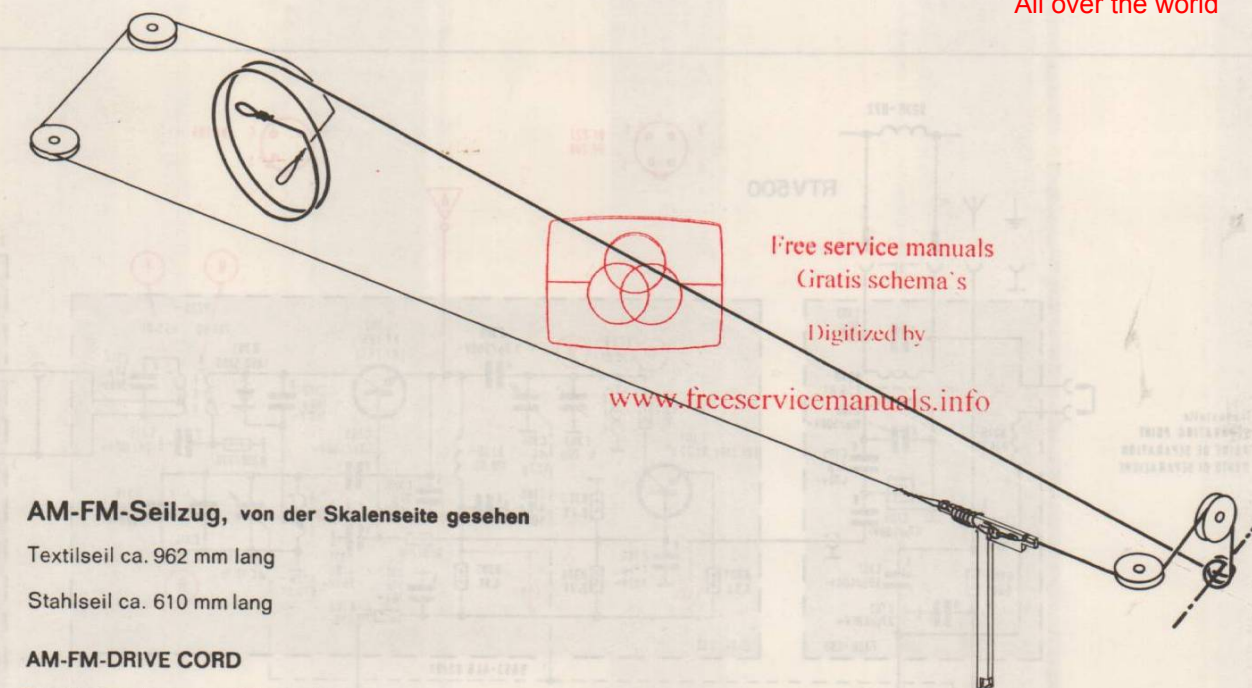
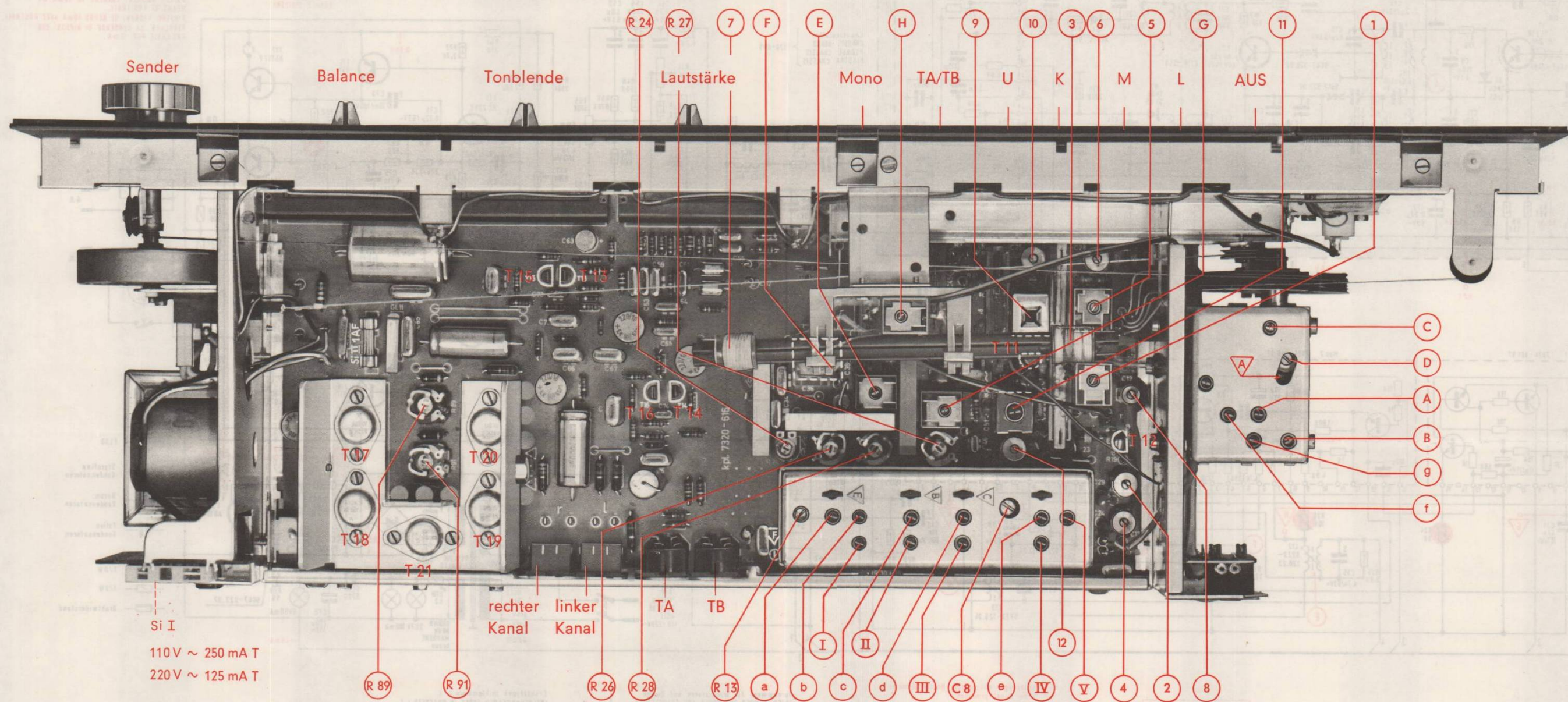


(19-8074-1001)
RTV500
(11-1807-1123)

www.freeservicemanuals.info

C	101, 102, 103, 104, 105, 106, 107,	11, 11, 12, 13,	15, 16,	17, 18,	19, 21,	23, 24, 26, 28, 29,	31, 32,	33,	34,	35, 36,	37,	38,	39,	41, 42,	43, 44,	45,	46, 48, 49,	51,	52, 54, 56, 58, 61, 63, 65,	66,	68, 69, 71, 73, 75,	77, 78, 79,	81,	82, 83, 84,	C
R	110,	11,	12, 13, 14,	15,	17, 20, 18,	19,	16, 22,	23,	24,	25,	26,	27, 28,	29, 31,	32,	33, 35, 37,	39,	41,	42, 44, 46, 102, 48, 51, 53, 55, 57, 59,	62, 64, 66, 68, 71, 73, 75, 77, 79, 82, 84,	86, 88, 91, 93, 95, 97,	99,	101,	R		

Abgleich-Lageplan
ALIGNMENT SCHEME
PLAN DE REGLAGE
PIANO DI TARATURA



AM-FM-Seilzug, von der Skalenseite gesehen

Textilseil ca. 962 mm lang

Stahlseil ca. 610 mm lang

AM-FM-DRIVE CORD

Textile Cord, approx. 962 mm long

Steel Cord, approx. 610 mm long

ENTRAINEMENT AM-FM, VUE DU COTE CADRAN

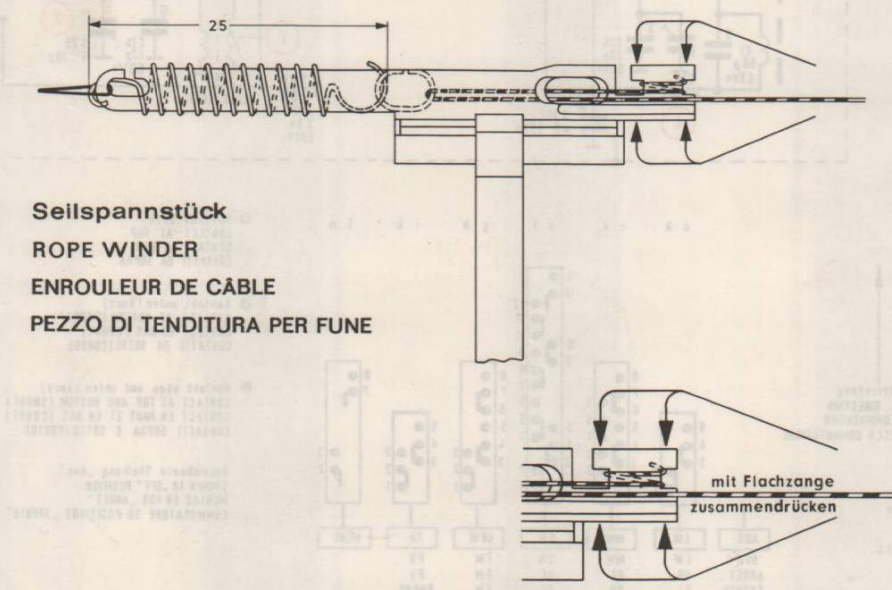
Câble textile, env. 962 mm de longueur

Câble acier, env. 610 mm de longueur

TRASMISSIONE AM-FM, A FUNE VISTA DAL LATO DELLA SCALA

Funicella in materiale tessile lunga circa 962 mm.

Funicella in acciaio lunga circa 610 mm.



Seilspannstück
ROPE WINDER
ENROULEUR DE CÂBLE
PEZZO DI TENDITURA PER FUNE