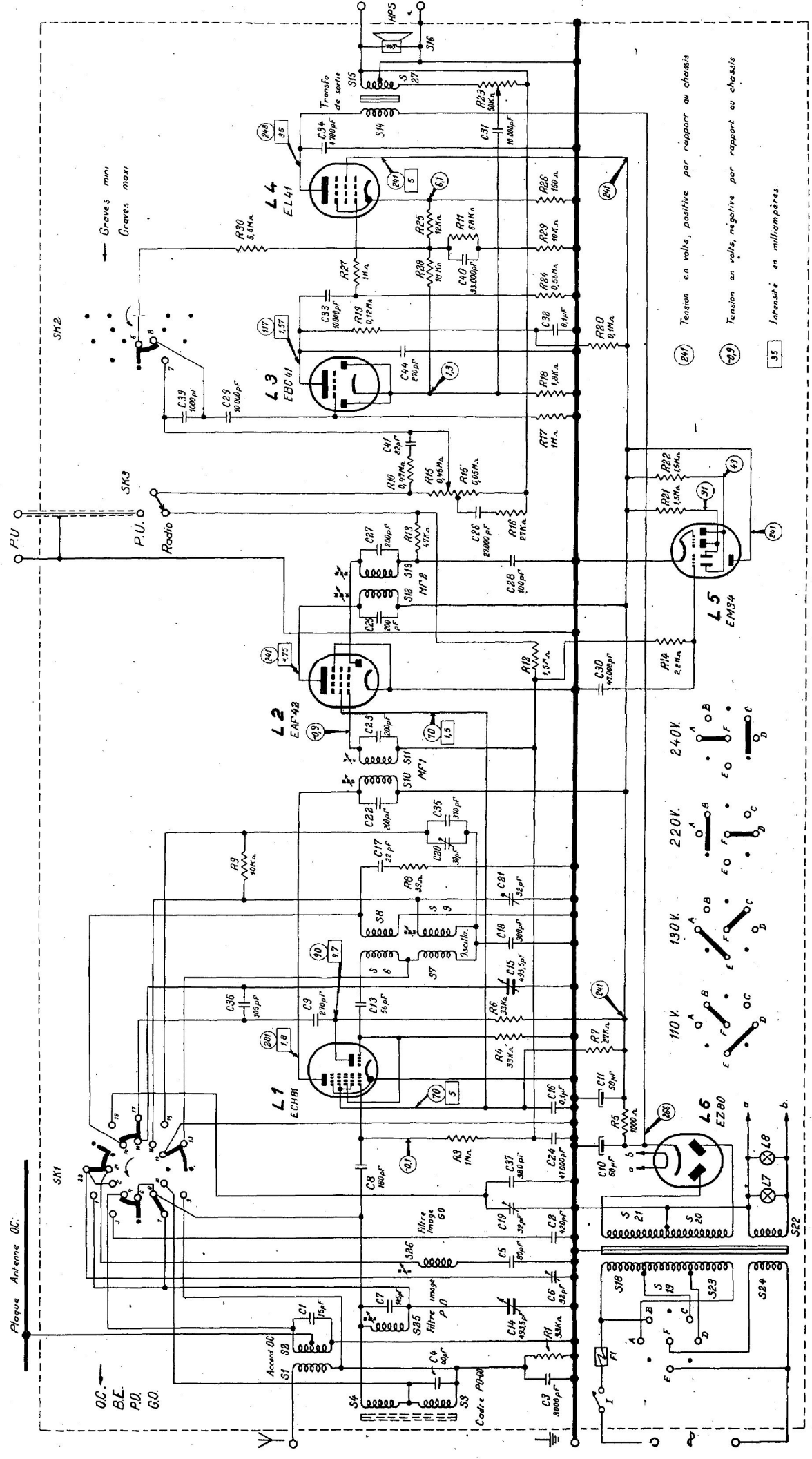
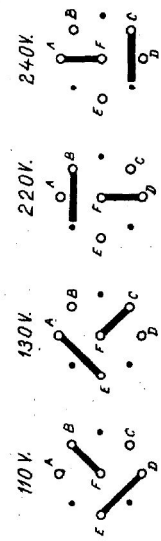


R	1	3-5	7-4-8	9-8	18-14	17-16	20-19	24-27-28-30-29	11-25-26	23-																
C	4-3	1-7-14	6-5-2	19	37-8	10-24	16-11	9-36-13-15	18	21	17-20	35-22-2	23	30	40-11	28-27	26	44-32	33	40	34-31					
S	4-3	1-2	25	18-19-23-24	21-22-26	6-7-8-9	10-11	12-13	14-15	16	17-18	19-20-21-22-23-24-25-26-27-28-29	30	31-32	33	34	35	36	37	38	39	40-41	42-43	44-45	46-47	48



(24) Tension en volts, positive par rapport au chassis  
 (29) Tension en volts, négative par rapport au chassis  
 (35) Intensité en milliampères



Plaque Antenne OC

Accord OC  
 S1 S2

BE  
 PD  
 GO

S4

S5

S6

S7

S8

S9

S10

S11

S12

S13

S14

S15

S16

S17

S18

S19

S20

S21

S22

S23

S24