

MC1310P

STEREO DEMODULATOR

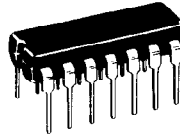
Specifications and Applications Information

FM STEREO DEMODULATOR

- a monolithic device designed for use in solid-state stereo receivers.
- Requires no Inductors
- Low External Part Count
- Only Oscillator Frequency Adjustment Necessary
- Integral Stereo/Monaural Switch: 75 mA Lamp Driving Capability
- Wide Dynamic Range: 0.5–2.8 V (p-p) Composite Input Signal
- Wide Supply Range: 8–14 Vdc
- Excellent Channel Separation Maintained Over Entire Audio Frequency Range
- Low Distortion: Typically 0.3% THD at 560 mV (RMS) Composite Input Signal
- Excellent SCA Rejection

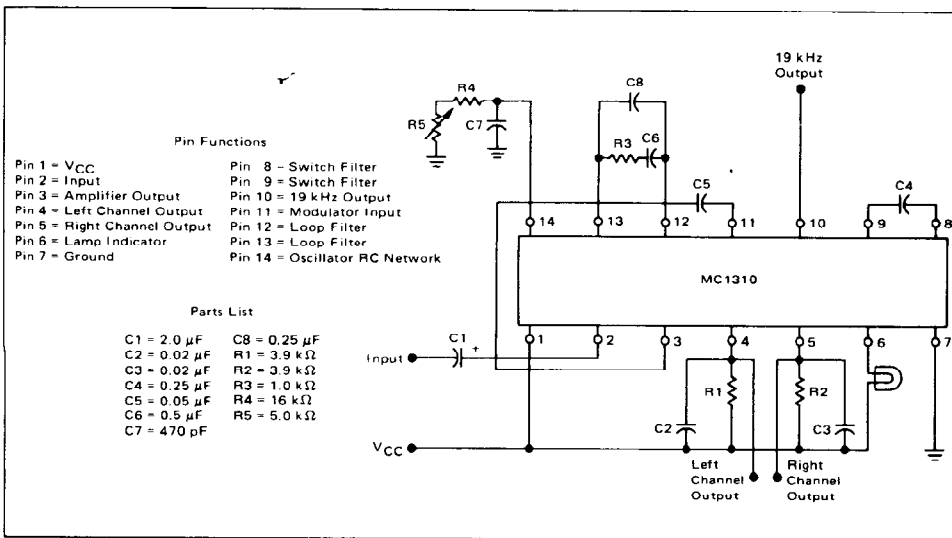
FM STEREO DEMODULATOR

MONOLITHIC SILICON INTEGRATED CIRCUIT



CASE 646

FIGURE 1 – TYPICAL APPLICATION AND TEST CIRCUIT



See Packaging Information Section for outline dimensions.

8